



Friends of Anstead Bushland

Anstead Bushland Reserve

Creek Catchments Program – Five Year Site Plan

Report: Year Three (December 2023-November 2024)






Year Three Goals and Achievements¹

Project 1: Enhancing Anstead Bushland Reserve ecosystems through assisted natural bush regeneration

This project continued to be the central focus for Pullen Pullen Catchments Group (PPCG) bushcare group, Friends of Anstead Reserve (FOAB), during Year Three of our Anstead Bushland Reserve (ABR) Five Year Site Plan. The application of assisted natural bush regeneration methods (involving careful hand weeding to allow native species to flourish in their place) continues to produce significant results, with extensive regeneration of native grasses and flowering plants within pegged areas A-C (see Site Map p.10 for location of FOAB’s BCC-approved bushcare zones in ABR and the specific sites mentioned in this report, including Pegs A-C). As shown in Figure 1, large areas are now almost weed free and native species such as *Sorghum nitidum* and *Swainsona queenslandica* (among others) are thriving.

Figure 1: Regeneration of native grasses and flowering plants around Pegs A-C

		
<p><i>Regenerating grasses in areas once covered by Lantana camara and Lantana montevidensis, Peg A (8/11/24)</i></p>	<p><i>Sorghum nitidum, Peg A (15/11/24) (Only online record of this species in Brisbane)</i></p>	<p><i>Swainsona queenslandica in flower, Peg A (4/10/24)</i></p>

¹ This report should be read in conjunction with the *Anstead Bushland Reserve, Creek Catchments Program – Five Year Site Plan*, which provides a detailed explanation of the projects and other activities planned for Anstead Bushland Reserve as well as maps that show our BCC-approved bushcare zones. Links to the Site Plan and Yearly Reports to date can be found on the Pullen Pullen Catchments Group website Bushcare Groups page: <https://www.pullenpullencatchments.org.au/bushcare-groups/>

The strong contrast between these regenerating areas and untreated areas close by is shown in the left hand image in Figure 2: this is the weed-infested view across the main walking trail, directly opposite Peg A. Figure 2 also presents images of wildlife observed adjacent to and within Pegs A-C: a koala that spent some time observing a bushcare session in April from a strategically-placed ironbark (koalas were seen again in this area on several other occasions during the year); and a spotted pardalote captured by our wildlife camera inside a large hollow tree that fell in the area in April 2024.

Figure 2: Weeds and wildlife adjacent to and within Pegs A-C



The potential for future expansion of Project 1's assisted natural bush regeneration was advanced during 2024 with support from a Lord Mayor's Environment Fund (LMEF) grant to reduce the cover of *Lantana camara* and invasive vines in an area between Pegs A-C and the Collared Delma site set up for Project 3 (see LMEF label on Site Map p.10). Oxley Creek Catchments Association (OCCA) was contracted to undertake this work: results from their first session (conducted on 27/8/24) are shown in Figure 3. Another session on 3/9/24 extended the work and follow up visits are scheduled for 2025.

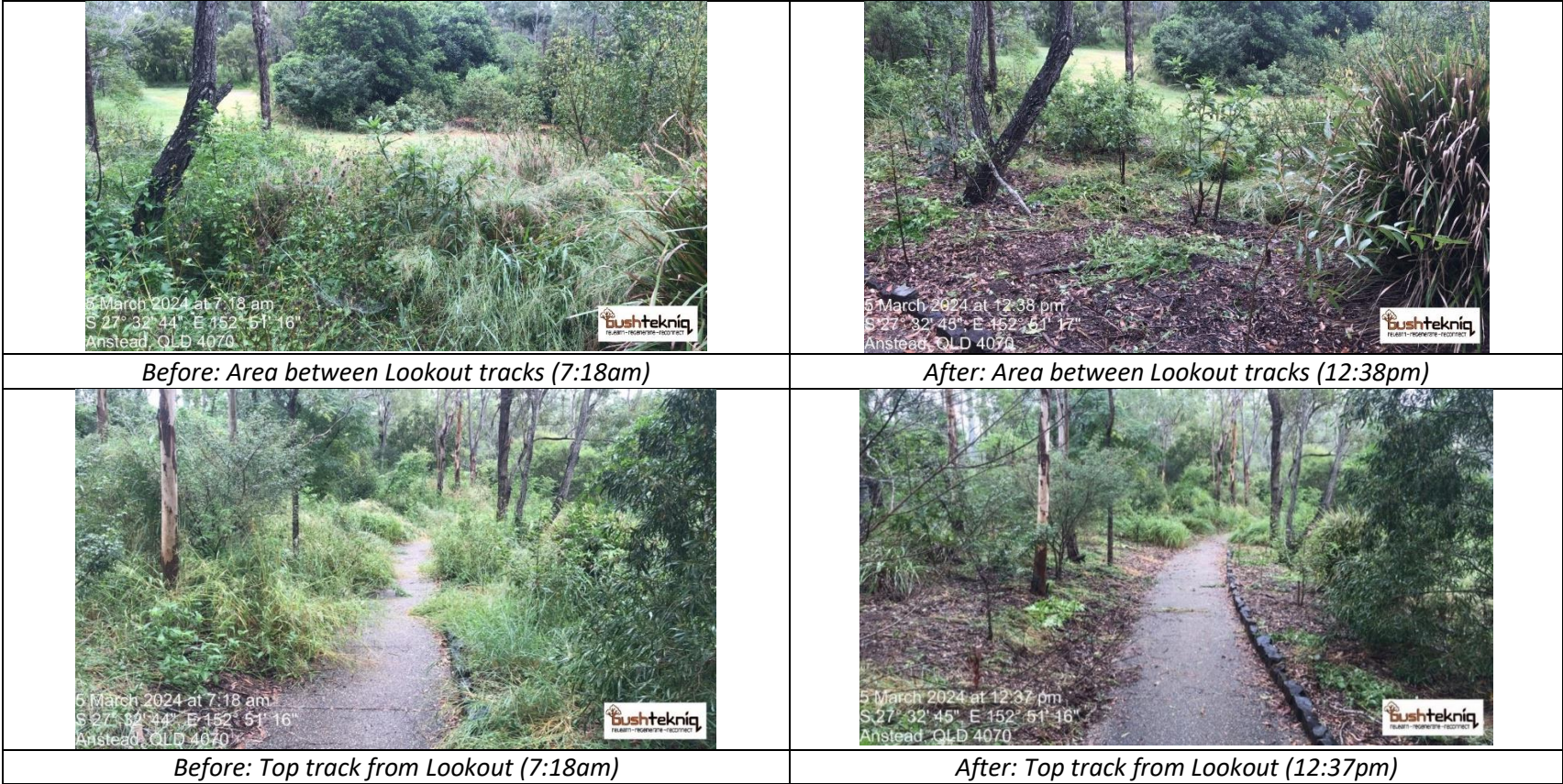
Figure 3: Lord Mayor's Environment Fund (LMEF) grant – working to reduce invasive weeds, August 2024



Project 2: Maintaining and enhancing the condition of previously replanted high-visibility areas





This project was advanced during Year Three through three large weeding tasks for which contractors were hired. The first – removing the extensive flush of weeds from the Lookout area following the wet summer – was undertaken in March by Bushtekniq with BCC funding (see Figure 4 & Lookout label on Site Map p.10). Later in the year (10/7/24) Rio Tinto volunteers assisted with further weeding and planting native grasses and trees in this area. As the year draws to a close, FOAB volunteers are continuing weeding and working to spread mulch in this area to support the plantings and retard weed regrowth over summer.

Figure 4: Weed removal in areas surrounding the Lookout, Bushtekniq, 5 March 2024



The second large weeding task for Project 2 was funded through a Community Conservation Assistance (CCA) grant focused on areas either side of the main walking trail as it leads into the Powerline Easement (see CCA label on Site Map p.10). It involved staggered visits from OCCA teams (see Panel A, Figure 5 for the results of a May 2024 visit). The third contracted task – steam weeding a Singapore Daisy infestation adjacent to the CCA site and funded by PPCG – was undertaken by Bushtekniq (see Panel B, Figure 5). Strategies to limit Singapore daisy regrowth and encourage the spread of native species include Bushtekniq’s transplantation of *Commelina diffusa* runners to this area after weeding and the planting of native grasses by Rio Tinto volunteers in August 2024.

Figure 5: Weed removal alongside main walking trail, CCA project and Singapore daisy removal, May 2024

Panel A		
	<p><i>Untreated area adjacent to CCA site (10/5/24)</i></p>	<p><i>CCA site after weeding by OCCA (10/5/24)</i></p>
Panel B		
	<p><i>Singapore daisy infested area (16/4/2024)</i></p>	<p><i>After steam weeding sessions by Bushtekniq (30/5/2024)</i></p>

Project 3: Improving habitat for the vulnerable Collared Delma (*Delma torquata*)

Project 3, which aims to improve habitat for the vulnerable Collared Delma (*Delma torquata*) in ABR, was assisted in 2024 with the success of a second federally-funded collaborative project, *Improving the Trajectory of Collared Delma in South-East Queensland*². Funds from this grant enabled follow up weeding in the ABR area treated in the previous Collared Delma grant (see Collared Delma project label on Site Map p.10). Figure 6 presents images of the site before and after weeding in October 2024. Further weeding is planned under subsequent phases of this grant in 2025.

Figure 6: Collared Delma habitat enhancement in ABR, October 2024



This grant also supported a Community Field Day in ABR to extend awareness of the Collared Delma and other threatened species. Hosted by PPCG in the ABR Picnic Area on 5 October 2024, the Fabulous Fauna Field Day attracted 109 attendees who enjoyed the schedules performances. These including a demonstration of scent detection dogs trained to seek out Collared Delma and other threatened species (by Dennis Gannaway, Kholo Creek Catchment Group), an interactive play

² This project, which received support from the Australian Government’s Saving Native Species Program, runs for two years from February 2024 and is a partnership between Lockyer Uplands Catchments Inc. (LUCI), Pullen Pullen Catchments Group (PPCG) and Kholo Creek Catchment Group (KCCG).

'Delma Went for a Walk' presented by holistic bushcare group, Bushtekniq, and a Geckoes Wildlife show that provided encounters with numerous threatened reptiles and other animals. After opening words from our local representatives (Cr Greg Adermann, Christian Rowan MP and Elizabeth Watson-Brown MP), Mervyn Mason (Kholo Creek Catchment Group) delivered an introductory information session on the Collared Delma. Attendees received documentation on Collared Delma habitat and University of Southern Queensland student, Tabitha Wieden, gave a presentation on her current research examining the impact of weed control on Collared Delma populations. Free refreshments were served and free native plants, many of which were suitable for restoring Collared Delma habitat, were available to all to take home.

Figure 7: Fabulous Fauna Community Field Day, Anstead Bushland Reserve, 5 October 2024



Demonstration by Dennis Gannaway of dogs trained to locate Collared Delma and other threatened species

'Delma went for a walk' – interactive play presented by Bushtekniq with audience participation



Geckoes Wildlife encounter: Leaf-tailed gecko

University of Southern Queensland display (Meg Edwards and Tabitha Wieden)

Free native plants (John and Kaaren Ness, PPCG President and Treasurer respectively)

In addition to site weeding and the Community Field Day, the project *Improving the Trajectory of Collared Delma in South-East Queensland* is developing a management plan for the Powerline Easement through ABR. The plan will recommend strategies to enhance Collared Delma habitat within the Easement, with initial weeding work also to be funded by the project. Future funding will be sought to continue implementation of the plan which will complement Project 3 by extending areas supportive of Collared Delma within the Reserve and providing crucial wildlife corridors connecting areas of good habitat.

Other activities during Year Three

Additional activities during Year Three included hosting teams of corporate volunteers from Rio Tinto (organised through Volunteering Queensland) on 10/7/24 and 23/8/24. These volunteers established a new natural bush regeneration site adjacent to Peg A as well as working on weed reduction in the Lookout area and planting native grasses where Singapore daisy had been steam weeded. As in Year Two, these activities contributed not only to our Site Plan's long-term goal of sustainable enhancement of the natural environment within ABR but also to the goal of educating and engaging the community in bushcare regeneration.

A further development during Year Three was setting up an area for solarisation of weeds and weed seed under heavy duty jute matting (see Solarisation site label on Site Map p.10). This provides a fully biodegradable way of dealing with weed waste and should help to limit the spread of fertile weed material. Its utility will be assessed over the remaining years of the Site Plan. Another improvement was the acquisition of a gazebo in November 2024 to provide shade for volunteers.

Figure 8 presents some pictures of these other activities along with some images taken by volunteers or captured via our wildlife cameras during 2024. (Feral deer and foxes were sighted on several occasions: these were reported to BCC.)

Figure 8: Additional images captured during 2024

		
<p><i>Dusky blue butterfly egg, Peg A (12/4/24)</i></p>	<p><i>The deer that barked (19/4/24)</i></p>	<p><i>Red necked wallaby near Peg B (29/9/24)</i></p>
		
<p><i>Rio Tinto volunteers, weeding in Lookout area (10/7/24)</i></p>	<p><i>Solarisation of weed waste – the first weed pile about to be covered with jute matting (30/8/24)</i></p>	<p><i>Gazebo set up to provide shade and rain protection for FOAB volunteers (15/11/24)</i></p>

Site Map: FOAB's BCC-approved work zones in Anstead Bushland Reserve, showing location of specific sites referred to in this report

